

**SOLANO COUNTY GENERAL SERVICES DEPARTMENT
PARKS AND RECREATION DIVISION**

Spencer C. Bole
Director, General Services

Daniel R. Sykes
Parks Services Manager



675 Texas Street, Suite 2500
Fairfield, CA 94533
(707) 784-3118

**AGENDA -- Park and Recreation Commission
Thursday, January 14, 2010 - 5:30 PM
Hearing Room - 1st Floor, 675 Texas Street, Fairfield, CA**

1. **Call to Order and Roll Call**
2. **Approval of Minutes for the November 12 Meeting (Action Item)**
3. **Approval of Agenda (Action Item)**
4. **Elect 2010 Chair and Vice-Chair, and Incoming Chair Comments (Action Item)**
5. **Committee Reports (Action Item)**
 - A. **Grants Review Committee:** Approve Recommended Changes to the Procedural Guides for Fish and Wildlife Propagation (FWPF) and Suisun Marsh Specific Funds (SMSF)
6. **Approve Staff Recommendation to Develop Beverage Container Restrictions and Surveys of Alcohol Use and Alcohol-Related Contacts (Action Item)**
7. **Approve Staff Recommendation for Fee Schedule Changes for FY2010/11 (Action Item)**
8. **Review Facility Use Guidelines for Lake Solano Nature Center (Discussion, Possible Action)**
9. **Parks and Recreation Division Staff Report (Informational Only)**
 - A. Attendance and Revenue Tracking
 - B. Status of Ongoing Grant Projects (FWPF and SMSF grant programs)
 - C. Comment Letter for Shiloh III Project
10. **Public Comments**
11. **Set Possible Dates for Special Meeting/Field Trip (Action Item)**
 - A. To examine wind turbine energy proposal for Sandy Beach Park, and view Grant Projects at Suisun Marsh Natural History Association
 - B. Date will be confirmed via posting at least 3 days in advance, or by calling 784-7905

The County of Solano does not discriminate against persons with disabilities and is an accessible facility. If you wish to attend this meeting and you will require assistance in order to participate, please call (707) 784-7905 at least 24 hours in advance of the event to make reasonable arrangements to ensure accessibility to this meeting.

If you wish to address any item listed on the Agenda, please submit a Speaker Card before the Commission considers the specific item. If you wish to address an item not on the agenda, please submit a Speaker Card before the first speaker is called for Public Comments. Cards are available at the entrance to the hearing room.

SOLANO COUNTY PARK AND RECREATION COMMISSION

**UNAPPROVED MINUTES OF THE MEETING HELD
THURSDAY, NOVEMBER 12, 2009**

**County Administration Center - First Floor Hearing Room,
675 Texas Street, Fairfield, California**

Commission Members Present: Riddle, Hermsmeyer, Leong, Alvarez

Commission Member Excused: Whited

Staff Present: Sykes, Tanner-Linné

1. Call to Order and Roll Call

Chair Hermsmeyer called the meeting to order at 5:30 p.m. Tanner-Linne called roll. A quorum was confirmed.

2. Approval of Minutes for October 28, 2009 Special Meeting

Motion to approve (Alvarez), with second (Riddle). October 28, 2009 minutes approved unanimously.

3. Approval of Agenda

Motion to approve agenda with addition of item #5C (Status of Wind Turbine Project) (Leong), with second (Riddle). Approved unanimously.

4. Chair Announcements and Commissioner Comments

The Chair stated there was none at this time.

5. Parks and Recreation Division Staff Report

A. Revenue and Attendance Tracking

Staff presented graft charts with figures of attendance and revenue from FY 2004 – 2009. The charts show the parks at present are where they were in FY 2004. Lake Solano revenues were down from previous years but Sykes stated there had been a lot of construction at the park and that may be why the revenue and attendance is down from past years.

Sandy Beach Park has met the revenue of Lake Solano. Sykes stated, Richard Chandler, Park Ranger Supervisor has a good grasp as to that people want to see to enjoy their visit at the park.

Hermsmeyer stated as additional improvements of the facilities are made, people will show up and the revenues and attendance will increase. This is true at Lake Solano but also at Sandy Beach. As a resident of Rio Vista, Sandy Beach Park has become a destination and I am happy to see this.

Riddle stated he has driven by Lake Solano many times and wondered why the Day Use Area is not being actively used? Sykes stated he had worked with the City of Vacaville regarding having programs during the summer at the park, and also working on a concessionaire for the boat/canoe revenue to help draw additional visitors and revenue.

Leong said before Duane Davis retired they were looking at placing a bridge over Putah Creek between the Main Park and the Youth Area. Leong also stated a man, who works for the Forest Service had given him a price for a bridge in the area and stated the price would be over \$250,000. Leong said he was not sure if there might be a grant or a partnership to obtaining funds for something this large. There is not that much to do in the Youth Area but if it was connected to the main section of the park more kids could enjoy the park. One problem is during certain times of the year the water rushes down Pleasants Creek and floods at times.

Hermesmeyer stated he knew some contacts with the State, who were bridge engineers that may be able to design a foot bridge but it would have withstand the flood periods also. There are several good designs.

B. Update on Ongoing SMSF and FWPF Grant Projects

Staff presented the status of the awarded grant projects from the Suisun Marsh Specific Grant Fund and the Fish and Wildlife Propagation Fund Grants awarded in FY2008/09. Some projects have been completed, but most are in-progress or waiting on permits. Project completion deadline for the grants is 6/30/10. Approximately \$28,000 has been paid out in grants so far.

C. Status of Wind Turbine Project

A 50 foot wind turbine is proposed for a location in or near Sandy Beach Park that would supply all of the park's electricity. The electricity is used in the park's office, residence, pumps, campsite hookups and lighting. This would save on the utility part of the park's budget. Sykes showed the areas where the turbine might be located. The commission discussed the different sites and the pros and cons of each site. Some of the discussion regarded the different locations and the noise of the turbine if located near a campsite or the visibility of the turbine if placed near the water. Alvarez requested that staff include as evaluation criteria: the relative visibility and noise impacts of the turbine at each location and the effect on waterfowl.

Sykes stated he had invited Jason Campbell, Facilities Operations Manager to attend the next Park and Recreation Commission meeting and advise the commission regarding the turbine.

Hermesmeyer said one thing about having a turbine is we are going green and it is a good educational experience for children.

Riddle stated there would need to be barriers are it. Staff said there would be fences around to keep the public at a safe distance.

6. Consider Approval of Lynch Canyon Success Criteria

This is the third version of the success criteria, which is revised each year, and main items to note that are proposed to change are to increase the usage at the Park by developing programs that further support healthy lifestyles and community participation for Solano County residents, and attract new uses of the site (including artistic, scientific, cultural or other activities). Also proposed is a marketing program for park events, which was suggested by your Commission.

The criteria will go to this commission with your approval tonight and then be reviewed with the Tri-City and County Citizens Advisory Committee, the Tri-City Governing Board, Solano Land Trust Board and finally to the Solano County Board of Supervisors.

Leong asked about having Lynch Canyon on a Facebook page. When something is happening or you need something, you could place it on your Facebook and everyone connected to your Facebook would know immediately. We need a bridge so if we put it out there and see how people could help or have ideas on how to obtain or make it happen.

Sykes stated the action before the commission tonight is to approve these recommendations.

Riddle stated he makes a motion we accept the report tonight. Alvarez seconded and the motion passed unanimously.

7. Discussion of Commissioner Field Trip in New Year

Sykes stated he felt a field trip would be good in 2010. Is there anything the Commissioners would like to see? Riddle stated there was some property at Lake Solano that was going to be swapped between organizations to enlarge Lake Solano, what happened to this idea. Maybe the Commission could look at this site. Leong asked about the property at Pierce Lane. The status of it and if a park could be formed like Belden's. Hermsmeyer asked about the Western Train Museum and maybe having an RV park at the site. He stated it was important to keep ideas open even with the financial time. There were several areas listed in the Master Plans for the different parks.

Alvarez and Riddle stated it would be good to see Sandy Beach before the January 14th meeting regarding the wind turbine proposal.

8. Committee Reports

a. Complete Formation of, and Directions to Grants Review (ad hoc) Committee

Hermsmeyer stated he is volunteering to sit on the Ad Hoc Committee and has asked Jerry Emanuelson to be the Chair for the committee. Would staff supply the names of everyone that will be on the committee and set up some dates for the committee to meet also, could staff supply the questions to start the committee? Sykes stated he would do this.

9. Public Comments

There were no public comments.

10. Confirm next regular meeting of January 14, 2010 at 5:30 pm, and adjourn at 6:40 p.m.



AGENDA SUBMITTAL TO SOLANO COUNTY PARK AND RECREATION COMMISSION

<u>ITEM TITLE</u>	<u>COMMISSION MEETING DATE</u>	<u>AGENDA NUMBER</u>
Approve Recommendation of Grants Review Committee to Revise the Procedural Guides for the Fish and Wildlife Propagation Fund and Suisun Marsh Specific Fund Grant Programs	January 14, 2010	5
Staff Contact:	Dan Sykes, Parks Services Manager	
Phone:	784-3118	
E-Mail:	drsykes@solanocounty.com	

SUMMARY:

County Staff recommends that the Commission approve the Recommendation of the Grants Review Committee to revise the Procedural Guides for the Fish and Wildlife Propagation Fund (FWPF) and Suisun Marsh Specific Fund (SMSF) Grant Programs, and direct staff to prepare the Guides for approval by the Board of Supervisors. The recommended revisions to the Procedural Guides, along with recommended changes in the timeline to distribute the funds, are shown on the attached chart.

Marked-up copies of the Procedural Guides will also be provided to Commissioners at the meeting.

DISCUSSION:

The Grants Review Committee is an ad hoc committee of the Park and Recreation Commission appointed by the Chair on October 28 and November 12, 2009. The Committee was formed to conduct an independent review of comments about the two grant processes. The Committee was specifically tasked with reviewing the comments received and reviewing the January 2008 Guidelines and Procedural Guides as required, in order to develop recommended changes to the grant processes to present to the Park and Recreation Commission.

Upon review and approval by this Commission, Staff would complete the final changes to the Procedural Guides and present a Commission recommendation to the Board of Supervisors next month, to revise the guides and distribute the FWPF Procedural Guide to applicants. This would begin the next FWPF grant cycle for, with grant awards tentatively anticipated in July 2010. The next SMSF grant cycle would follow this, beginning in summer 2010.

The Committee met three times, November 30, 2009, December 7, 2009 and January 7, 2010. The Committee reviewed comments submitted to the Board of Supervisors in August 2009 as well as other concerns generated during the meetings. The Committee did not solicit other public comments, as recommended by Staff, because they felt the issues listed on the attached chart represents the full scope of concerns expressed by previous applicants to the grant programs.

Attachment: Recommended Revisions to FWPF and SMSF Procedural Guides and Programs

Recommended Revisions to FWPF and SMSF Procedural Guides and Programs
 Grants Review Committee, Solano County Park and Recreation Commission
 1/7/10

Issues To Discuss	Committee's Recommendation (by Consensus)	Page # in Guide
<p>a Support programmatic projects such as invasive weed control and educational programs</p>	<p>Modify Procedural Guides to allow program projects without specific properties identified, provided that:</p> <ul style="list-style-type: none"> • applicant submits program agreement from each landowner, that states they want to participate and own or are authorized to control the property • OK to submit program agreement after application is turned in, but must be submitted to County <u>prior</u> to contract execution • total scope of project must be no more than lands and work stated in program agreements <p>Modify CEQA form in Procedural Guide to allow for an applicant with a programmatic project to state how all prospective landowners will be covered by a specified programmatic CEQA document and permits</p>	<p>T/a</p>
<p>b Evaluation Committee should be comprised of professionals in wetland resource mgmt. or wildlife biology, or with experience in habitat/restoration projects in Suisun Marsh.</p>	<ul style="list-style-type: none"> • Consensus that 1 member of Evaluation Committee should be this • Commission should solicit a professional with these qualifications in as objective a manner as possible, and avoiding conflicts of interest with applicants <p>Recommend removing studies from eligible projects (see Item f below).</p>	<p></p>
<p>c Priority should not be given to studies, but instead to projects in marsh where wildlife species and the marsh were directly impacted by the spill.</p>	<p>Recommend removing studies from eligible projects (see Item f below).</p>	<p></p>
<p>d Cost share commitments greater than 25% minimum should be given favorable consideration</p>	<p>Consensus to leave this requirement as it is, so that smaller applicants with smaller match not discouraged</p>	<p></p>

e	Simplify requirements for land tenure and permitting documentation.	<ul style="list-style-type: none"> County Counsel has OK'd accepting statement from participating landowner signifying ownership, instead of a deed. Instruct eval. committee that use of programmatic permits and CEQA documents are OK. 	
f	Avoid funding studies that don't result in enhancement or restoration in directly impacted wetlands or wildlife habitats.	<p>Although studies are and will continue to be important to the preservation of the long term health of Suisun Marsh, it is the Committees opinion that the funds be used exclusively for the priorities established in the Kinder Morgan Settlement Guidelines (January 2008). Funding of studies is problematic because there are not sufficient funds available for a long-term or in-depth study that would produce effective results, the funds could instead be used for more tangible projects that make physical improvements to the land, and eliminating studies from funding will help make the evaluation and selection of projects more straightforward.</p>	Removed from both Guides
g	Modify application scoring process by developing objective review process that focuses on biological merits of each proposal.	A revised scoring system was developed for each grant program. Only 20% of points will evaluate the application completeness. 80% will evaluate merit.	
h	Consider conducting site inspections with the applicants to review the projects.	Not needed, as long as applicants can make presentation to all Evaluation Committee (see Item I).	
i	Reduce rigorous Procedural Guides for implementing funded projects.	Move as much explanatory material to appendices as possible and move application closer to front of Guides	
j	Private landowners are not ranked fairly. (SC has calculated 94% of funds awarded to public applicants, 6% to private)	<ul style="list-style-type: none"> Private landowners will be able to apply through programmatic projects to reduce amount of individual work they need to do land tenure and project monitoring requirements will be reduced timeline for applications will be increased 	n/a
k	Additional time should be added for submitting applications	8 weeks should be allowed for application period. Workshop to be held 2 weeks after Procedural Guide is released, then 6 additional weeks to complete app.	

l	Applicants should be able to make a presentation to the Evaluation Committee, prior to the scoring being done, possibly at the same time as the Park and Rec. Commission. The presentation should include time for questions from the Eval. Committee	n/a
m	Requirement for a topographic map and site map should be combined. The Suisun Marsh is flat.	These map requirements should be combined in Procedural Guides.
n	Allow more space to respond to questions	Change Guides to allow 10 pages, SINGLE spaced.
o	Requiring an applicant to do a "monitoring program" (see p. 17 of 51, FWPF Guide) is not always relevant – should be removed	Question should be revised to ask "What methods will you use to measure the success of your proposed project?"
p	Should private landowners be allowed to apply for the FWPF funds too, as well as SMSF funds?	General consensus that yes, private applicants for FWPF grants should be allowed.
q	Define what is meant by "threat" in the FWPF Guide. The wording should be changed.	Consensus that no change should be made. Threat is well enough defined in the evaluation criteria for applicants to respond, as applicable to their project.
r	Define what is meant by "stakeholder" in the FWPF Guide. The wording should be changed.	Wording used should be "partnership" which is what is referred to in the 2008 Kinder Morgan Settlement Guidelines. FWPF Procedural Guide should specify that partnerships may include "public use <u>OR</u> (not "and") public agencies or non-profits." Public use of the land is not required, particularly on private lands.
s	Timing of Grant Awards to be extended	Based on difficulties evaluating and distributing the funds, the Committee recommends: <ul style="list-style-type: none"> FWPF grant cycle should proceed from Feb-July 2010, with the \$200,000 funds to be re-budgeted to FY2010/2011. Tentative award date would be July/Aug 2010. SMSF grant cycle should start from roughly Sept. 2010 to Feb. 2011, with \$200,000 funds re-budgeted to FY2010/2011. Tentative award date would be Feb/March 2011.

(continued, next page)

	<ul style="list-style-type: none"> • In FY2011/2012, only SMSF Grant cycle will be conducted (the balance of all SMSF funds to be distributed in that cycle, or \$200,000 + accumulated interest). • In FY2012/2013, only FWPF Grant cycle will be conducted (the balance of all FWPF funds to be distributed in that cycle, or \$200,000 + accumulated interest). 	
--	--	--



AGENDA SUBMITTAL TO SOLANO COUNTY PARK AND RECREATION COMMISSION

<u>ITEM TITLE</u>	<u>COMMISSION MEETING DATE</u>	<u>AGENDA NUMBER</u>
Approve Staff Recommendation to Develop Beverage Container Restrictions and Surveys of Alcohol-Related Contacts by Rangers and Public Opinion on this Issue	January 14, 2010	6
Staff Contact:	Dan Sykes, Parks Services Manager	
Phone:	784-3118	
E-Mail:	drsykes@solanocounty.com	

SUMMARY:

County Staff recommends that the Commission approve the Staff Recommendation to develop restrictions on beverage containers (specifically glass bottles and kegs) and develop and implement a survey of alcohol-related contacts by Rangers, and a survey of public opinion.

DISCUSSION:

Your Commission has discussed the issue of establishing regulations for alcohol use in the County Parks previously in 2006, when you recommended changes to County Code Section 19-190, and most recently at the May 14, 2009 Commission meeting, when Staff presented a sampling of alcohol restrictions being used in other park systems. These restrictions include a ban in all parks, ban in certain locations, ban on glass containers, an alcohol permit system, ban on open containers, and ban on alcohol except wine and beer. Currently, alcohol use in the County Parks is allowed, and Park Rangers make a concerted effort to set a moderate tone for its use by contacting park users who are drinking, to prevent problems.

Staff has reviewed the other available options to consider their appropriateness in the Solano County Parks. Park Ranger Supervisor Richard Chandler and Park Ranger Chris Drake are here tonight to present the results of their investigation, which included reviewing past alcohol-related incidents in the parks, discussing anecdotal observations from other rangers, making visits to other parks, making phone calls and conducting on-line research of alcohol regulations at other park systems. There are positive and negative aspects to each option.

Based on this investigation, the Parks Services Manager recommends an incremental approach, which would begin with developing a ban on certain types of beverage containers that tend to be more often involved in park safety problems (glass bottles and kegs), and to conduct a more accurate survey of alcohol-related contacts encountered by our County Park Rangers than the anecdotal data that is currently available. This survey will help Staff to better assess whether having more restrictive alcohol policy in place would have improved public safety during those incidents. In addition, a survey of public opinion about alcohol use in the parks would also be helpful in making decisions.

With the Commission's approval, Staff will proceed with developing restrictions on glass containers and kegs with County Counsel, and will begin collecting data for a survey of alcohol-related incidents and a survey of public opinion during this spring and summer. Staff will return to the Commission with the results of the survey in fall 2010, and a recommendation of whether the available options for restricting alcohol use are warranted and appropriate in the County Parks.



AGENDA SUBMITTAL TO SOLANO COUNTY PARK AND RECREATION COMMISSION

ITEM TITLE Approve Recommended Fee Schedule Changes for FY2010/2011	COMMISSION MEETING DATE January 14, 2010	AGENDA NUMBER 7
Staff Contact: Phone: E-Mail:	Dan Sykes, Parks Services Manager 784-3118 drsykes@solanocounty.com	

SUMMARY:

Staff recommends that the Commission approve the fee increases shown below, which reflect the increased value to park users of the County providing these services, and are similar to other comparable facilities providing these services within or around Solano County.

DISCUSSION:

Staff annually reviews the parks services fees charged to park users to determine the current value to park users of the County providing these services, and looks at costs of comparable services offered in and around Solano County. The proposed fees reflect increasing costs of services to the County over the 3+ years since these fees were last altered. The proposed fees shown below are similar to or less than comparables. They would go into effect July 1, 2010.

Fee	Current FY2009/2010	Proposed FY2010/2011	Justification
Annual Pass (unlimited parking + boat launch)	\$80.00	\$95.00	Includes value of \$2 boat launch fee added last yr. If fees paid daily: \$5 parking + \$2 launch = \$7/day (pay off: 14 visits) Sacramento County launch + parking pass: \$100 Yolo County boat launch + parking pass: \$95 Viera's Resort (private) launch pass: \$150
Annual Pass, Senior/Disabled (unlimited parking + boat launch)	\$40.00	\$55.00	Maintains \$40 discount rate for senior/disabled persons. (Pay off: 8 visits at \$7/day)
Reservation Fee	\$8.00	\$9.00	Reflects increased labor cost over 4 yrs
Campsite, regular rate, Utility hookup	\$25.00	\$30.00	Brannan Island (state park): \$30-\$40 Pleasure Cove (private): \$33.50/couple + \$4/person
Campsite, regular rate, utility w/ sewer	\$30.00	\$35.00	Brannan Island (state park): \$30-\$40 Pleasure Cove (private): \$37/couple + \$4/person
Campsite, senior rate, Utility hookup	\$15.00	\$20.00	Maintains \$10 discount rate for senior/disabled
Campsite, senior rate, utility w/ sewer	\$18.00	\$23.00	Maintains \$12 discount rate for senior/disabled
Tent site	\$16.00	\$21.00	Yolo County (no water or ranger): \$20 Pleasure Cove (private): \$31.50/couple + \$4/person
Tent site, senior	\$8.00	\$13.00	Maintains \$8 discount rate for senior/disabled
Non-camper, utility hookup	\$25.00	\$30.00	Pays same as camper rate for use of utilities
Non-camper, utility hookup w/ sewer	\$30.00	\$35.00	Pays same as camper rate for use of utilities

Draft Facility Use Guidelines
Lake Solano Nature Center

Commission Discussion Draft, 1/14/10

Facility Details

- Exhibit/rental space 2,200 SF (with 3 aquariums): 148-person occupancy
- Covered back patio: 1,135 SF
- Small catering/warming kitchenette (stove, oven, microwave, dishwasher)
- M/W Restrooms and Lobby Area (198 SF)
- Outdoor education circle, paved (114 SF), with small turf area

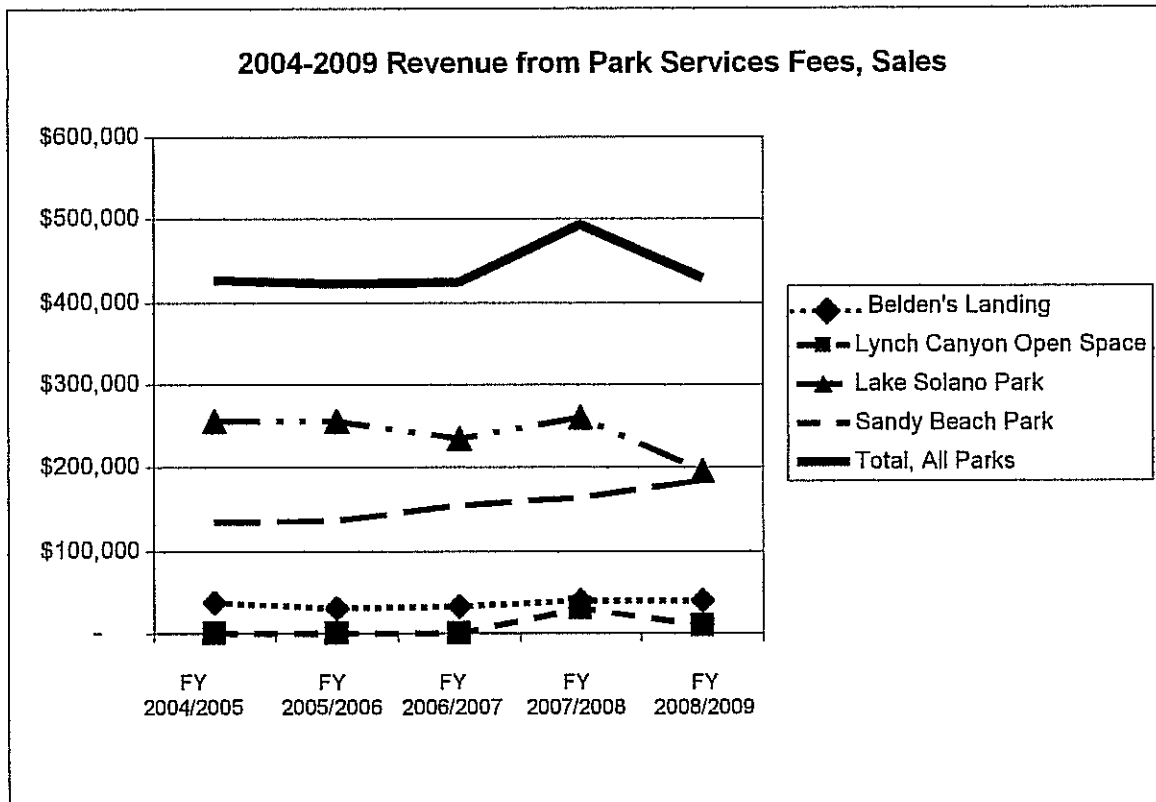
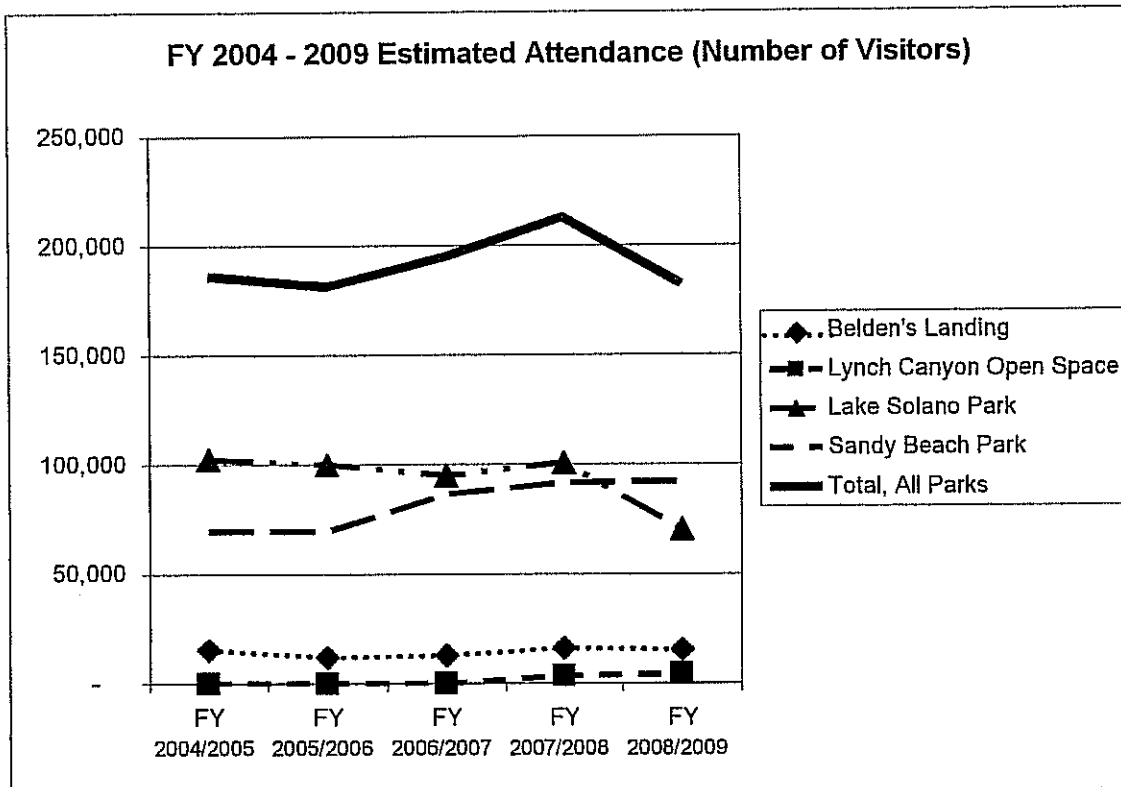
Intended Uses of Lake Solano Nature Center

1. Educational programs on nature and water resources of Lake Solano, Putah Creek, the park itself, and larger Putah Creek and Lake Berryessa watershed
2. Meeting point for park tours by Docents and Rangers
3. Temporary educational and artwork exhibits with themes of nature, land and water conservation, wildlife, outdoor recreation, or water-related recreation
4. Limited use for rentals that generate revenue to support park operations
5. Hold meetings for organizations/agencies with nature- or water-related missions, and hold events to be focused at Lake Solano Park, or within the Putah Creek watershed (reduced rates for non-profits and public agencies).
6. Small, well controlled events that embrace the natural setting as part of the activity. Examples are: children's birthday party with nature theme, fundraising event for eligible organizations/agencies, small wedding.
7. Outdoor educational circle: staging point for park tours, outdoor activity check-in spot, temporary outdoor displays on nature and water themes

Not Intended Uses for Lake Solano Nature Center

1. Not intended as general purpose community center
2. Not intended for large groups (no more than 148) or late-night parties that will disturb nearby campers

Item 9A: Prior Years' Attendance and Revenue



Item 9A: Attendance and Revenues to Date For FY 2009/10

Attendance and Revenue Summary

Month	Park	Estimated Visitors	Revenue
Jul-09	Belden's	953	733.00
	Lake Solano	4,168	29,477.83
	Lynch	110	419.80
	Sandy Beach	9,666	24,465.82
Total		14,897	\$ 55,096
Aug-09	Belden's	672	3,061.00
	Lake Solano	7,963	12,937.85
	Lynch	200	498.54
	Sandy Beach	12,300	20,701.07
Total		21,134	\$ 37,198
Sep-09	Belden's	3,024	5,615.00
	Lake Solano	7,434	16,430.42
	Lynch	373	279.08
	Sandy Beach	9,852	21,386.07
Total		20,683	\$ 43,711
Oct-09	Belden's	983	4,836.00
	Lake Solano	5,508	18,030.86
	Lynch	134	300.00
	Sandy Beach	6,738	15,549.11
Total		13,363	\$ 38,716
Nov-09	Belden's	2,966	7,470.00
	Lake Solano	3,033	10,976.94
	Lynch	268	792.53
	Sandy Beach	5,964	18,986.00
Total		12,231	\$ 38,225
Dec-09	Belden's	-	-
	Lake Solano	-	-
	Lynch	-	-
	Sandy Beach	-	-
Total		-	\$ -

Month	Park	Estimated Visitors	Revenue
Jan-10	Belden's	-	-
	Lake Solano	-	-
	Lynch	-	-
	Sandy Beach	-	-
Total		-	\$ -
Feb-10	Belden's	-	-
	Lake Solano	-	-
	Lynch	-	-
	Sandy Beach	-	-
Total		-	\$ -
Mar-10	Belden's	-	-
	Lake Solano	-	-
	Lynch	-	-
	Sandy Beach	-	-
Total		-	\$ -
Apr-10	Belden's	-	-
	Lake Solano	-	-
	Lynch	-	-
	Sandy Beach	-	-
Total		-	\$ -
May-10	Belden's	-	-
	Lake Solano	-	-
	Lynch	-	-
	Sandy Beach	-	-
Total		-	\$ -
Jun-10	Belden's	-	-
	Lake Solano	-	-
	Lynch	-	-
	Sandy Beach	-	-
Total		-	\$ -

FY	Park	Estimated Visitors	Revenue
2009/2010	Belden's	8,420	\$ 21,715
	Lake Solano	28,105	\$ 87,854
	Lynch	1,085	\$ 2,290
	Sandy Beach	44,520	\$ 101,088
Totals to Date			
Annual Total		82,330	\$ 212,946.92

ITEM 9B
SMSF Grant Awards, FY 2008/09
STATUS UPDATE

1/6/2010

Grant Recipient	Executed Grant Contract on file? (with date signed by Co.)	Amount Awarded (\$)	Advances paid out (\$)	Date of Advance	Reimbursement paid out \$	Date of Reimbursement Pymt.	Amount of grant remaining unpaid (\$)
California Water Fowl/F&G Cordelia Slough	9/28/2009	3,100			2,084	Dec. 2009	\$1,016.00
California Waterfowl/F&G Grizzly Island Slough	9/28/2009	15,650			10,271	Dec. 2009	\$5,379.00
California Waterfowl/F&G Telemetry Equipment	9/28/2009	1,000					\$1,000.00
California Waterfowl/F&G Goodyear Slough*		14,300					\$14,300.00
Limbrducks, LLC/BillMarks, LLC	9/21/2009	15,750			15,750	Dec. 2009	\$0.00
Morrow Island Land Company*		10,000					\$10,000.00
Solano Land Trust	9/21/2009	14,600					\$14,600.00
Teal Club*		22,000					\$22,000.00
Totals		96,400	-		28,105		\$68,295.00

* Contract execution is waiting on US Army Corps' permit approval.

ITEM 9B
FWPF Grant Awards, FY 2008/09
STATUS UPDATE

01/06/10

Grant Recipient	Executed Grant Contract on file? (with date signed by Co.)	Amount Awarded (\$)	Advances paid out (\$)	Date of Advance	Reimbursements paid out	Date(s) of Payments	Amount of grant remaining unpaid
California Fish & Game Pond 15 Brood *		6,500					\$6,500.00
California Fish & Game Crescent Unit *		11,750					\$11,750.00
Delta Protection	3/23/2009	17,630					\$17,630.00
Frost Lake Reclamation District #2136	3/9/2009	975					\$975.00
Grizzly Fairview Farms #528	3/9/2009	19,500			13,200	05/15/09	\$6,300.00
Solano County Park & Recreation	3/9/2009	16,200	7,688	05/15/09	315	06/15/09	\$8,196.58
Solano Land Trust	3/9/2009	13,184	6,592	08/14/09			\$6,592.00
Solano RCD	3/16/2009	3,000			3,000	Dec. 2009	\$0.00
Suisun Marsh Natural History							
Totals		88,739	14,280		16,515		57,943.58

* Minus returned funds from CA, Fish & Game 18,250
70,489

* Minus returned funds from CA, Fish & Game 18,250.00
39,693.58

**SOLANO COUNTY PARK AND RECREATION COMMISSION
GENERAL SERVICES DEPARTMENT
PARKS AND RECREATION DIVISION**

Spencer C. Bole
Director, General Services

Daniel R. Sykes
Parks Services Manager



675 Texas Street, Suite 2500
Fairfield, CA 94533
707-784-3118
DRSykes@SolanoCounty.com

Mr. Ken Solomon
Contract Planner
County of Solano Department of Resource Management
675 Texas Street, Fifth Floor
Fairfield, CA 94501

January 5, 2009

Subject: Notice of Preparation (NOP) for DEIR for the Shiloh III Wind Energy Project

Dear Mr. Solomon:

The Solano County Park and Recreation Commission (Commission) is an appointed advisory body to the County Board of Supervisors, and is charged with reviewing, and advising the Board on, policies and projects that affect County Parks. In this capacity, the Commission is submitting the following comments on the appropriate scope of review for the upcoming draft environmental impact report (DEIR) for the Shiloh III Wind Energy Project. I am submitting these comments as the Chair on the Commission's behalf, since there was not an opportunity for the Commission to meet prior to the comments deadline.

It appears from the NOP map that some of the wind turbines would be located within 1-1/2 miles of Sandy Beach County Park. The park is not shown on the map. However it is a very popular County facility that serves 90,000 members of the public each year at its campground, picnic area, beach and boat launch. The park generated \$184,000 in park revenues to Solano County in FY 2008/09, the highest revenue producer of the 4 County parks. Impacts that reduce the park setting could result in reduced attendance and County revenues.

The Commission requests that the DEIR show the County's Sandy Beach Park on maps showing surrounding land ownerships. The Commission also requests that the DEIR evaluate and recommend appropriate mitigation measures for impacts that could adversely affect the park's recreational setting, its natural resources, public safety and revenue-generating potential. In particular, the Commission requests the following potential impacts of the project be evaluated, and mitigated as appropriate.

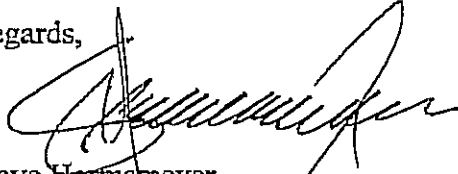
- Change in visual setting for campers and park users from locations within the park.
- Change in ambient noise for campers and park users from locations within the park.

ITEM 9C

- Extent of disruption to radio communication for park rangers, who rely on effective communication with the Sheriff's Office dispatch for officer safety.
- Potential impact of bird strikes on birds that use the park and surrounding landscape.

We appreciate the opportunity to comment on the NOP, and look forward to reviewing the DEIR. Please keep us informed of the status of this project through communication with myself and Dan Sykes, the County's Parks Services Manager and staff member to the Commission.

Regards,



Steve Hermsmeyer
Chair, Solano County Park and Recreation Commission

cc: Michael Yankovich, Solano County Planning Program Manager
Daniel Sykes, Solano County Parks Services Manager
Solano County Park and Recreation Commissioners: Michael Whited, Michael Alvarez, Terry Riddle, Robin Leong, Steve Hermsmeyer

ITEM 9C