

EXHIBIT C

Shiloh IV Wind Energy Project PROJECT PARCELS

Table 3.4-1
PARCELS AND PARCEL OWNERS COMPRISING THE PROJECT SITE

Landowner's Name	APN	Total Parcel Acres	Acres within Project Boundary
Anderson Edward A Jr Trust	0090-070-310	252.79	252.79
Anderson Edward A Jr Trust	0090-090-350	231.67	231.67
Anderson Eric Ian ¹	0090-090-230	161.27	161.27
Anderson, Jeanie ¹	0090-090-300	22.27	22.27
Anderson, Jeanie ¹	0090-090-310	25.12	25.12
Anderson, Jeanie ¹	0090-100-020	100.6	100.6
Engel Bros, et al ^{1,2}	0048-060-100	194.71	80
Coco Properties LLC ¹	0048-060-090	24.29	24.29
Coco Properties LLC ^{1,2}	0090-090-220	154.73	80
Coco Properties LLC ^{1,2}	0090-090-260	280.29	245
Coco Properties LLC ¹	0090-090-270	27.71	27.71
Coco Properties LLC ^{1,2}	0090-090-280	326.55	280
Coco Properties LLC ¹	0090-090-290	52.2	52.2
Coco Properties LLC ¹	0090-100-040	20	20
Hale Trust	0090-090-240	23.01	23.01
Hale Trust ²	0090-090-250	242.99	113
Hale Trust	0090-090-180	131.43	131.43
Stewart Thomas W, et al ¹	0048-060-180	612.58	612.58
Stewart Thomas W, et al	0048-070-340	106.78	106.78
Stewart Thomas W, et al	0090-070-070	131.5	131.5
Stewart Thomas W, et al	0090-090-010	190.35	190.35
Zadwick Kenneth A & Dolores E	0048-070-240	100.64	100.64
Total			3,012.21

¹ Currently part of Phase I or II of the enXco V project

² Only partially occupied by proposed project

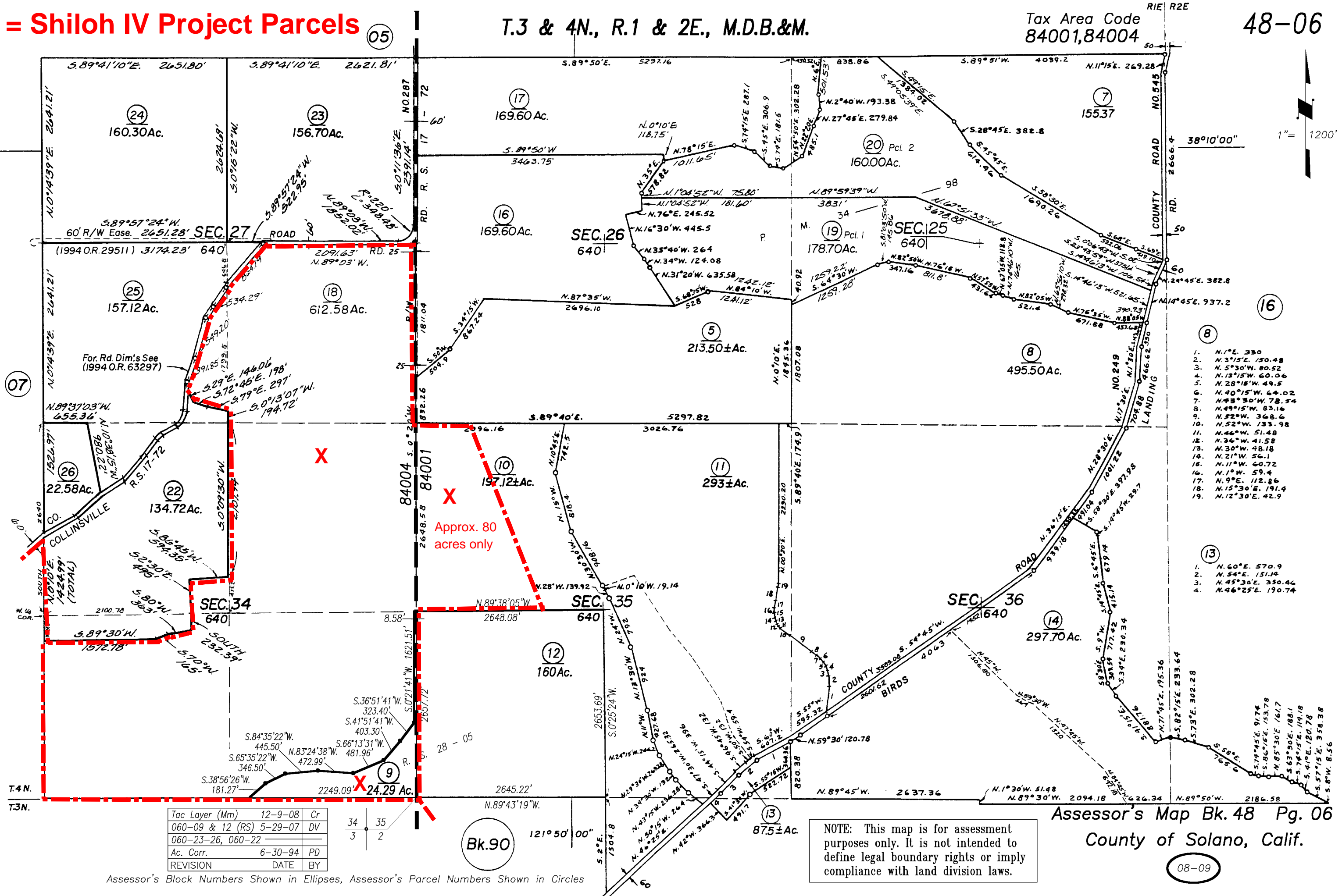
X = Shiloh IV Project Parcels

T.3 & 4N., R.1 & 2E., M.D.B.&M.

Tax Area Code
84001,84004

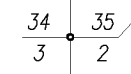
48-06

Copyright 1966, Solano County Assessor's Office. Recorder, All rights reserved.



1. N.1°E. 330
 2. N.3°15'E. 150.48
 3. N.5°30'W. 80.52
 4. N.13°15'W. 60.06
 5. N.28°18'W. 49.5
 6. N.40°15'W. 64.02
 7. N.43°30'W. 78.54
 8. N.49°15'W. 83.16
 9. N.52°W. 36.6
 10. N.52°W. 133.98
 11. N.46°W. 51.48
 12. N.36°W. 41.58
 13. N.30°W. 48.18
 14. N.21°W. 56.1
 15. N.11°W. 60.72
 16. N.1°W. 59.4
 17. N.9°E. 112.86
 18. N.15°30'E. 191.4
 19. N.12°30'E. 42.9
1. N.60°E. 570.9
 2. N.54°E. 151.14
 3. N.45°30'E. 350.46
 4. N.46°25'E. 190.74

Tac Layer (Mm)	12-9-08	Cr
060-09 & 12 (RS)	5-29-07	DV
060-23-26, 060-22		
Ac. Corr.	6-30-94	PD
REVISION	DATE	BY



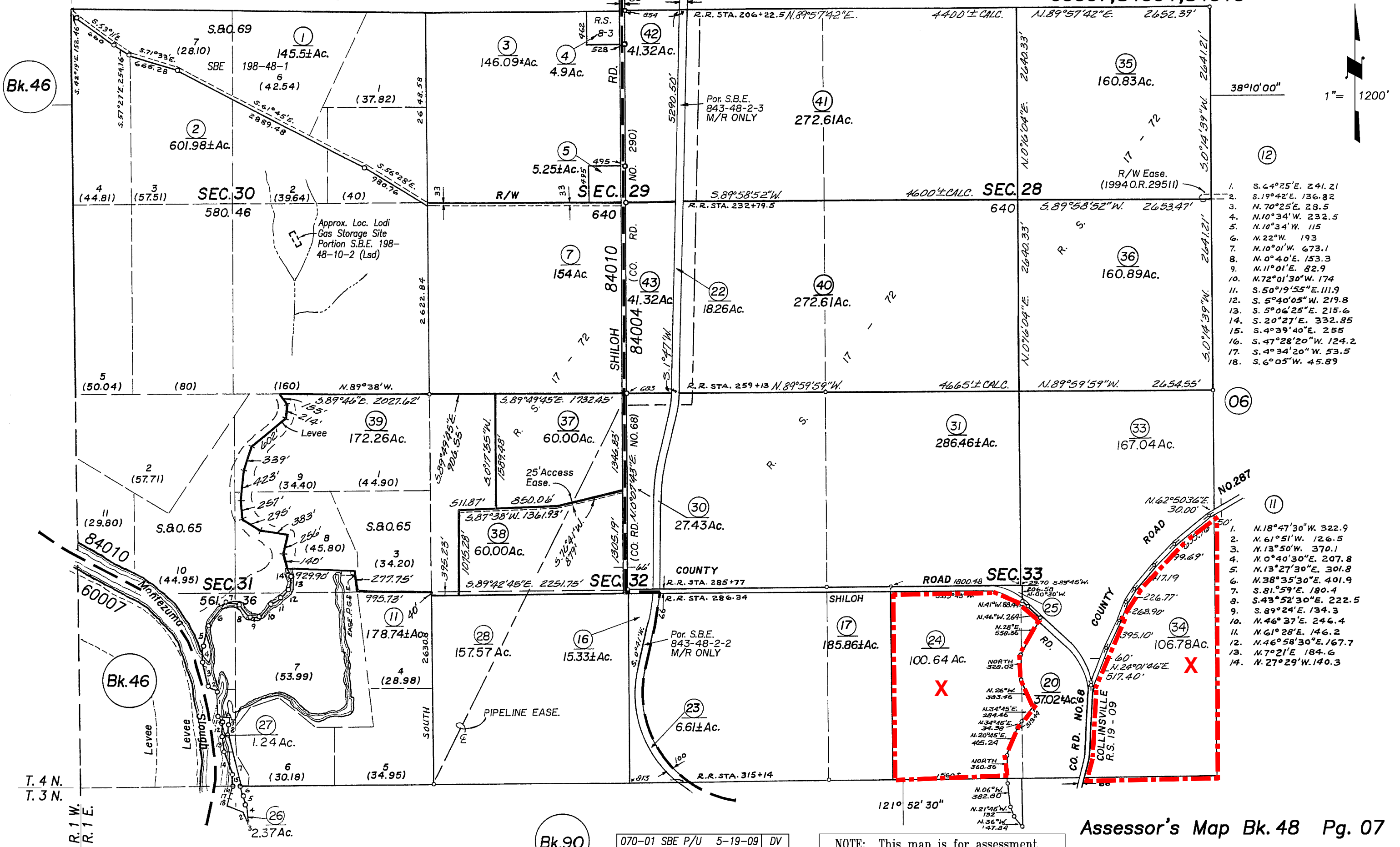
Bk.90

NOTE: This map is for assessment purposes only. It is not intended to define legal boundary rights or imply compliance with land division laws.

08-09

Assessor's Block Numbers Shown in Ellipses, Assessor's Parcel Numbers Shown in Circles

Copyright © 1999 Solano County Assessor. All rights Reserved

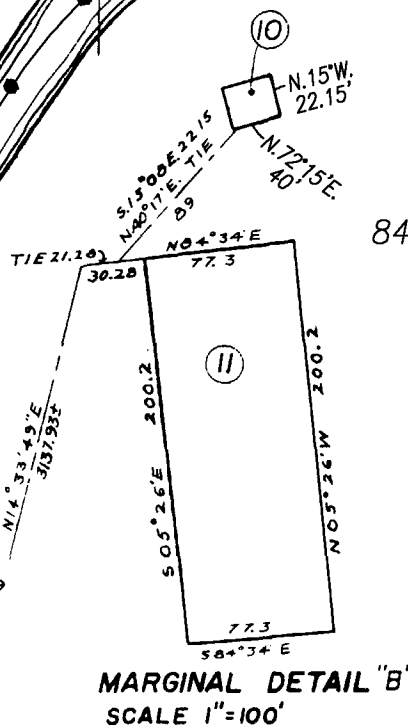
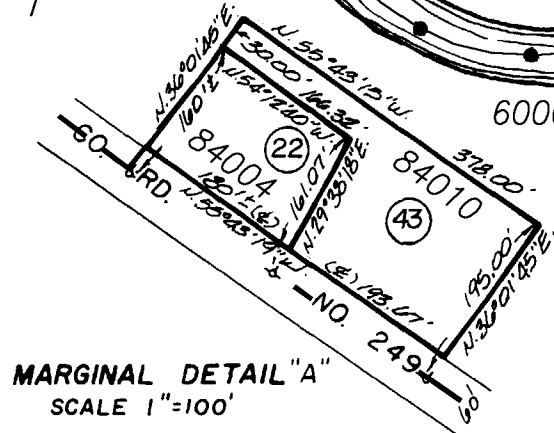
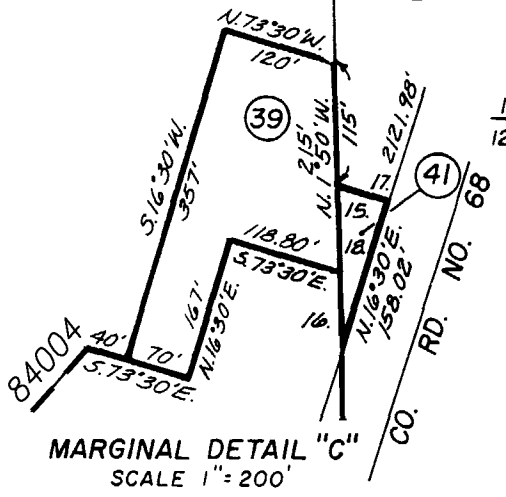
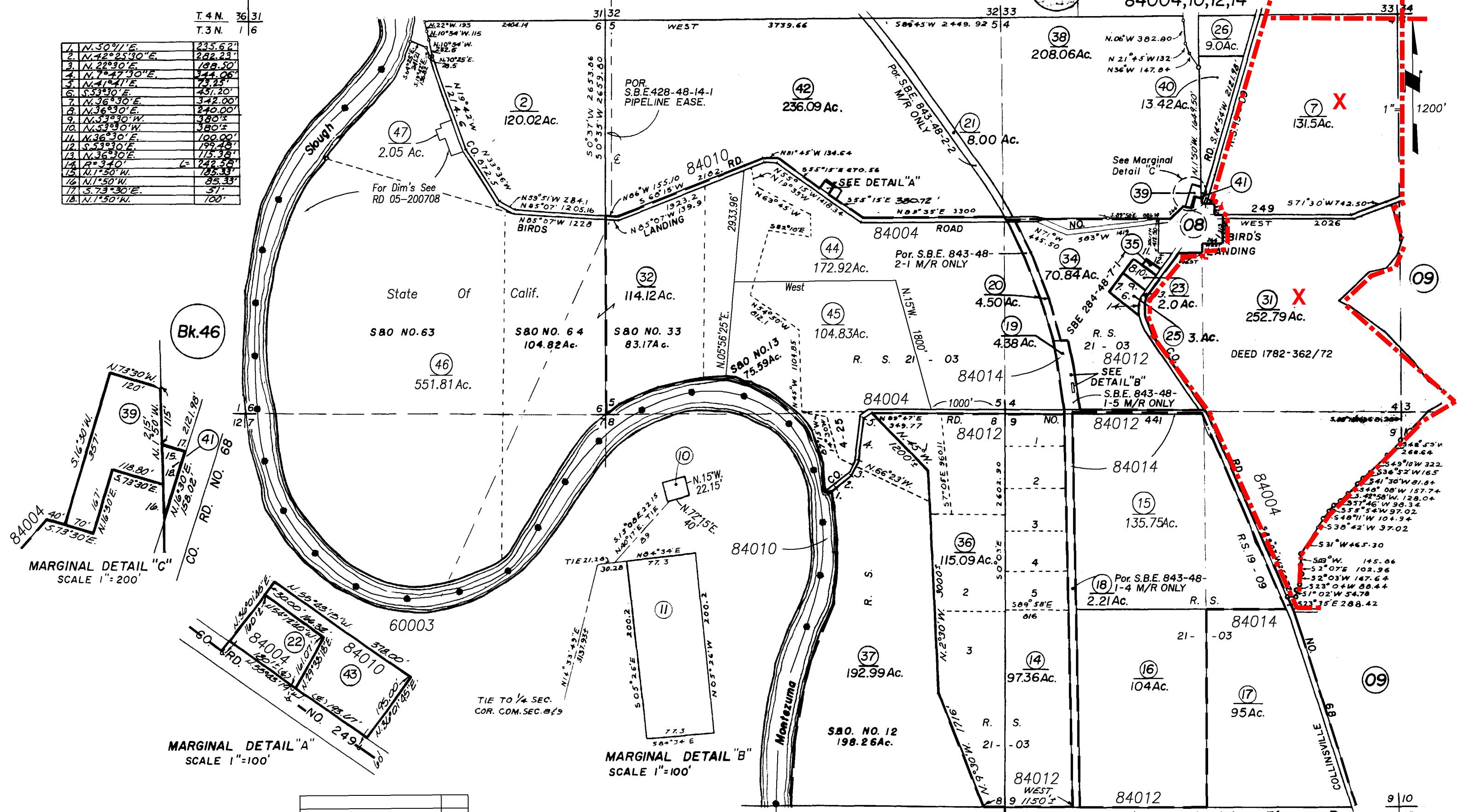


070-01 SBE P/U	5-19-09	DV
070-02 SBE P/U	12-9-08	Cr
070-02 SBE P/U	5-22-07	DV
070-40-43 (Dd)	1-31-96	SW
REVISION	DATE	BY

NOTE: This map is for assessment purposes only. It is not intended to define legal boundary rights or imply compliance with land division laws.

RIW	R1E
T.4N.	36/31
T.3N.	1/6

1	N.30°41'E.	235.62'
2	N.42°25'30"E.	282.23'
3	N.22°30'E.	188.50'
4	N.7°47'30"E.	144.06'
5	N.41°41'E.	75.25'
6	S.53°30'E.	451.20'
7	N.36°30'E.	342.00'
8	N.36°30'E.	240.00'
9	N.53°30'W.	380'±
10	N.53°30'W.	380'±
11	N.36°30'E.	100.00'
12	S.53°30'E.	199.46'
13	N.36°30'E.	115.38'
14	R=340'	L=242.58'
15	N.1°50'W.	185.33'
16	N.1°50'W.	85.33'
17	S.73°30'E.	51'
18	N.1°50'W.	100'



070-46,47 (Dd)	12-30-05	CR
070-15 Chg. Dd.	5-8-98	BW
070-44&45	7-24-97	DJ
REVISION	DATE	BY

NOTE: This map is for assessment purposes only and is not for the intent of interpreting legal boundary rights, zoning regulations and/or legality of land division laws.

Copyright © 1996, Solano County Assessor/Recorder. All rights Reserved.

NOTE: Assessor's Block Numbers Shown in Ellipses Assessor's Parcel Numbers Shown in Circles

X = Shiloh IV Project Parcels POR. T.3N., R1E., M.D.B.&M.

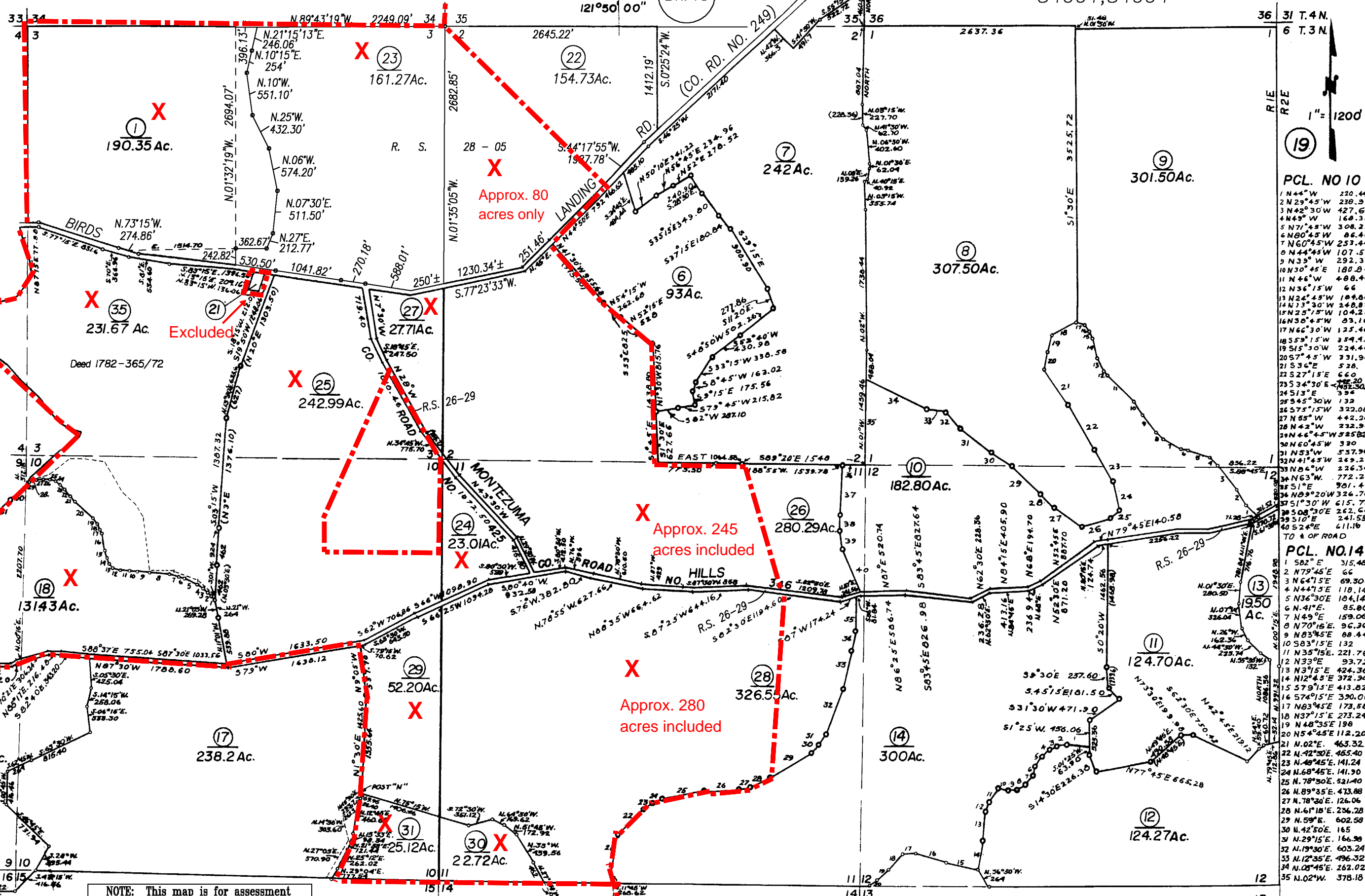
Tax Area Code
84001, 84004

90-09

PCL. NO. 18

- 1- N.37°33'W. 83.16
- 2- N.41°36'W. 69.96
- 3- N.48°16'W. 69.96
- 4- N.57°50'W. 63.62
- 5- N.66°03'W. 180.10
- 6- N.72°30'W. 70.62
- 7- N.80°05'W. 111.54
- 8- N.88°W. 239.58
- 9- N.97°08'W. 168.36
- 10- N.99°08'W. 97.02
- 11- N.84°56'W. 111.54
- 12- N.73°33'W. 104.94
- 13- N.83°16'W. 71.28
- 14- N.24°13'W. 88.64
- 15- N.16°02'W. 97.02
- 16- N.11°53'W. 207.90
- 17- N.21°06'W. 54.12
- 18- N.32°50'W. 83.16
- 19- N.41°53'W. 98.54
- 20- N.48°29'W. 321.42
- 21- N.41°15'W. 83.16
- 22- N.57°47'W. 111.54
- 23- N.45°04'W. 82.50
- 24- N.56°04'W. 69.96
- 25- N.71°53'W. 69.30
- 26- N.85°34'W. 97.68
- 27- S.82°19'W. 97.68
- 28- S.77°44'W. 125.40
- 29- S.45°06'W. 330.00
- 30- S.42°59'W. 266.64
- 31- S.49°10'W. 322.08
- 32- S.36°52'W. 165
- 33- S.41°30'W. 81.04
- 34- S.48°08'W. 157.74
- 35- S.42°58'W. 128.04
- 36- S.57°46'W. 98.54
- 37- S.55°54'W. 97.02
- 38- S.48°11'W. 104.94
- 39- S.38°42'W. 97.02
- 40- S.31°W. 465.30
- 41- S.03°W. 145.86
- 42- S.02°07'E. 102.96
- 43- S.02°03'W. 162.64
- 44- S.23°04'W. 88.44
- 45- S.01°02'W. 54.78
- 46- S.09°07'W. 258.72 TO CHL.
- 47- S.23°35'E. 288.42 ALG. CHL.

07



11

NOTE: This map is for assessment purposes only and is not for the intent of interpreting legal boundary rights, zoning regulations and/or legality of land division laws.

090-22 & 23 (Rs)	5-29-07	DV
Montezuma Hills Rd (Rs) 4-28-04		SE
ADJ SBE 318A	7-31-84	DJ
REVISION	DATE	BY

10

NOTE: Assessor's Block Numbers Shown in Ellipses
Assessor's Parcel Numbers Shown in Circles

08-09

Assessor's Map Bk. 90 Pg. 09 19

X = Shiloh IV Project Parcels T.3N., R.1E., M.D.B. & M.

PCL. NO. 3

1	N17°15'E	227.04
2	N33°40'E	300.96 (501.62)
3	N29°45'E	126.72
4	N10°15'E	105.60
5	N6°15'W	227.70
6	N10°15'E	254.10
7	N5°W	174.24
8	N4°E	254.08
9	S84°45'E	29.70
10	N36°15'E	147.18
11	N57°30'E	61.38 (62.70)
12	N79°15'E	81.18
13	S77°45'E	604.56
14	S65°35'E	116.16
15	S72°45'E	206.78 (225.12)
16	S38°15'W	280.50
17	N14°25'W	460.68
18	N1°15'W	363.66
19	N4°20'E	113.52
20	N19°E	343.20
21	N46°E	615.12
22	N25°25'W	246.18
23	N50°30'W	110.88
24	N36°W	211.86
25	N16°20'W	145.20
26	N32°W	266.64
27	N41°20'W	190.74
28	N37°10'W	392.70
29	N59°45'E	347.62
30	N75°45'E	351.78 (342.18)
31	S73°30'E	506.88
32	N88°15'E	464.64
33	N77°W	343.66
34	N70°W	140.58

35	N56°30'W	434.32
36	N63°45'W	136.62
37	N78°15'W	224.40
38	N86°W	147.84
39	S84°15'W	108.24
40	S76°10'W	293.70
41	S83°30'W	825.00
42	S69°45'W	122.10
43	S79°20'W	405.10
44	N54°30'W	570.24
45	N87°W	267.30
46	S64°55'W	109.24
47	S52°15'W	383.96
48	S55°30'W	739.06
49	N55°30'E	766.92
50	N51°15'E	203.8
51	N64°45'E	1047.42
52	N58°E	133.98
53	N52°E	110.22
54	N41°30'E	211.86
55	N25°E	187.44
56	N19°45'E	239.58
57	N36°45'E	160.38
58	N41°45'E	204.60
59	N57°15'E	431.64
60	N37°15'E	242.88
61	N53°15'E	417.12
62	N58°15'E	345.18
63	N78°15'E	360.94
64	N30°E	180.10
65	N14°30'E	269.34
66	N5°30'W	205.26
67	N10°25'W	510.84
68	N00°30'W	125.40
69	N17°E	179.86
70	N21°15'E	179.86
71	N58°40'E	149.82
72	N67°15'E	274.56
73	N61°45'E	289.74
74	N82°30'E	237.60
75	S8°E	740.52
76	S74°15'E	740.52
77	N53°30'E	52.80
78	N30°30'E	15.48
79	N23°15'E	55.44
80	N11°15'E	69.96
81	N12°45'W	432.30
82	N01°E	206.58
83	N11°45'W	268.62
84	S75°30'E	650'
85	S84°30'E	640'

PCL. 2

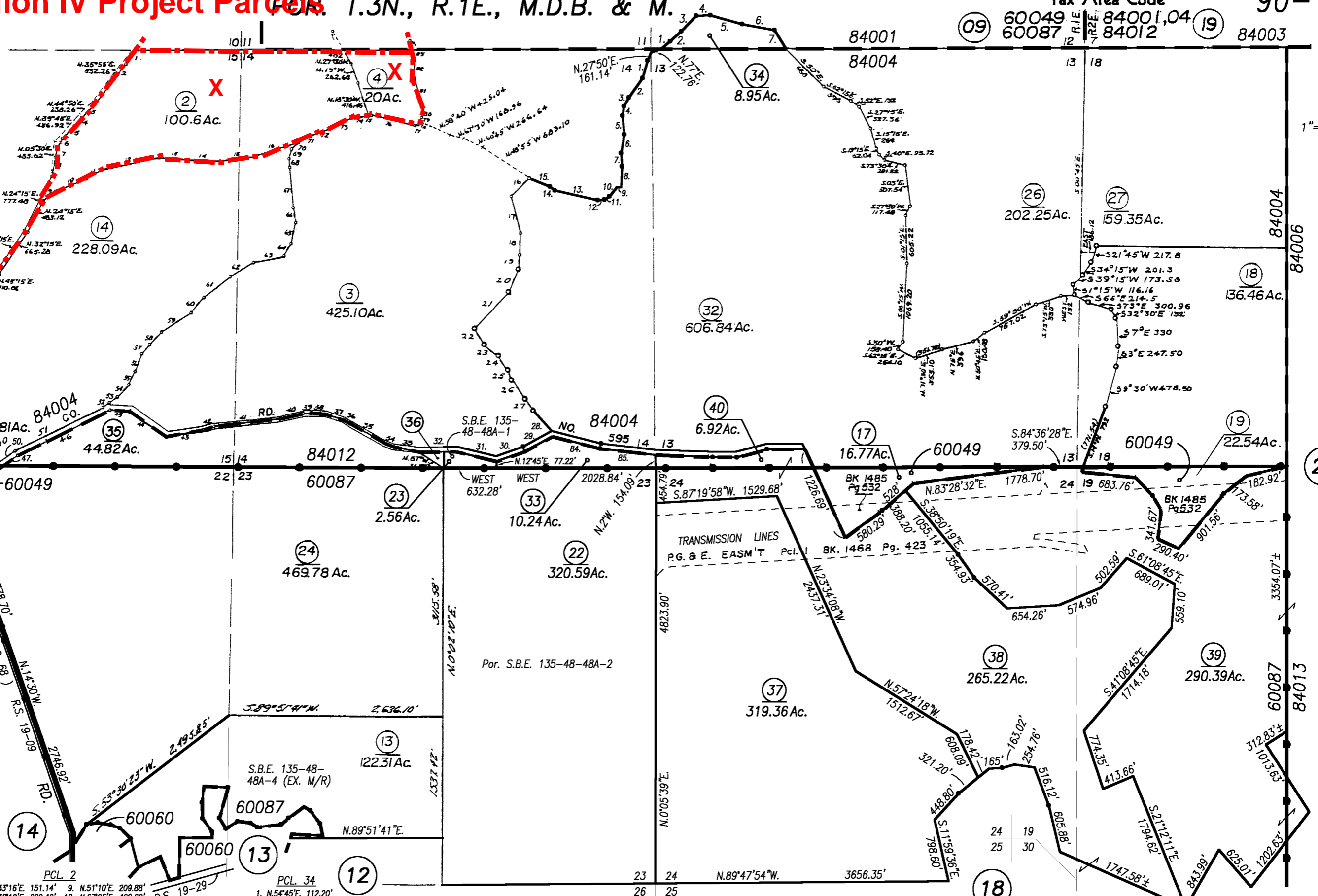
1.	N.33°16'E. 151.14'	9.	N.51°10'E. 209.88'
2.	N.36°18'E. 620.40'	10.	N.67°25'E. 429.00'
3.	N.44°02'E. 248.16'	11.	N.62°00'E. 231.00'
4.	N.42°57'E. 139.26'	12.	N.77°20'E. 729.30'
5.	N.38°57'E. 221.10'	13.	S.84°00'E. 346.50'
6.	N.25°19'E. 124.74'	14.	N.89°30'E. 407.88'
7.	N.13°33'E. 117.48'	15.	N.82°40'E. 451.44'
8.	N.08°49'E. 254.10'	16.	N.72°30'E. 543.84'

R.S. 19-29

PCL. 34

1.	N.54°45'E. 112.20'
2.	N.48°35'E. 198.00'
3.	N.37°15'E. 273.24'
4.	N.83°45'E. 173.58'
5.	S.74°15'E. 890.06'
6.	S.79°15'E. 413.82'
7.	S.36°30'E. 264.00'

Copyright © 1996, Solano County Assessor/Recorder, All rights Reserved



Assessor's Block Numbers Shown in Ellipses, Assessor's Parcel Numbers Shown in Circles

100-37thru40 (Lia)	9-4-09	Cr
S.B.E.-P.U. CHGS	2-2-00	Pd
100-35 & 36 (Dd)	5-16-95	S.W.
REVISION	DATE	BY

NOTE: This map is for assessment purposes only. It is not intended to define legal boundary rights or imply compliance with land division laws.